

# Basic Networking

## Training and Certification

Cyber Security Educational Courses Professional Sessions

## ABOUT US

We offer Cyber Security and Information Security training and Certification in Delhi for Cyber Security and Information Technology aspirants. Since Decade, we have been in the Information Technology and Cybersecurity industry. You can learn more about cybersecurity, Techniques, and Tools to choose a better career path.

## DESCRIPTION

Learn The Fundamentals of Networking with the most experienced trainers and mentors group in town to understand all the basic concepts associated with the Basic Networking Course for Beginners. In addition, our world-class teaching faculties provide in-house hands-on practice on the latest devices, labs, server racks, etc. This in-depth Basic Networking Course offers students the best knowledge and skills to pursue a greater career in Networking without engaging in any extra training.



Duration -  
40Hrs



Language -  
Hindi & English



Mode -  
Online & Offline

## BENEFITS

1. Basic to Advanced Courses
2. Interview Cracking and Proposal-Making Sessions
3. Transparent Syllabus
4. Career-Oriented Courses and Certifications
5. International Accreditation

# CRAW

A C A D E M Y

### SAKET ADDRESS

1st Floor, Plot no. 4, Lane no. 2,  
Kehar Singh Estate, Westend Marg,  
Behind Saket Metro Station,  
Saidulajab New Delhi - 110030

### LAXMI NAGAR ADDRESS

R31/ 32, 2nd floor Jandu Tower,  
Vikas marg, Shakarpur,  
New Delhi - 110092

www.craw.in

+91 951 380 5401



SAMPLE CERTIFICATE



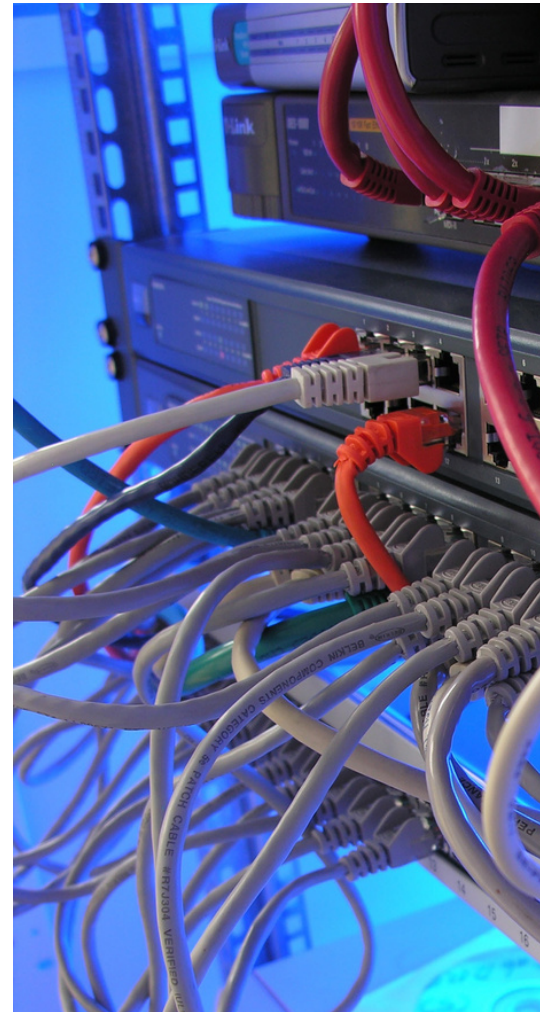
# Basic Networking

## Training and Certification

Cyber Security Educational Courses Professional Sessions

### BASIC NETWORKING COURSE MODULE

- Module 01: Computer Networking
- Module 02: Introduction To Networking
- Module 03: Ipv4 And Ipv6
- Module 04: Subnet Mask, CIDR, And Subnetting
- Module 05: VLSM, Wild Card, Summarization
- Module 06: OSI Model
- Module 07: TCP/IP Model
- Module 08: Network Devices, Cabling, Packet Tracer
- Module 09: ARP and ICMP
- Module 10: Packet Flow
- Module 11: Routing - Static And Dynamic
- Module 12: Static Routing - Next Hop Ip And Exit Interface
- Module 13: Dynamic - RIP
- Module 14: EIGRP
- Module 15: OSPF
- Module 16: Redistribution
- Module 17: Remote Services ( Telnet And SSH )
- Module 18: DHCP
- Module 19: ACL
- Module 20: Switching
- Module 21: L2 Protocols - CDP, VLAN, STP, DTP, VTP
- Module 22: Ether-Channel
- Module 23: Port Security



## CRAW SECURITY

LEARN | RESEARCH | INNOVATE

### SAKET ADDRESS

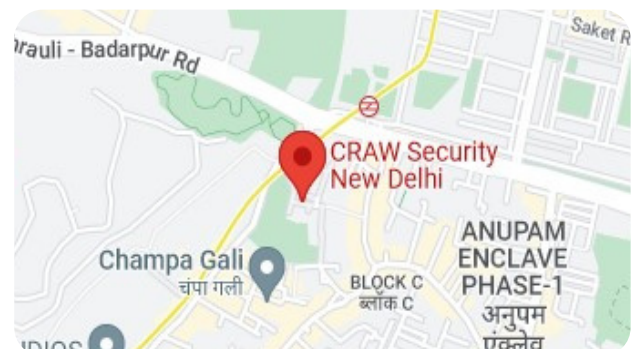
- 1st Floor, Plot no. 4, Lane no. 2, Kehar Singh Estate, Westend Marg, Behind Saket Metro Station, Saidulajab New Delhi - 110030

### LAXMI NAGAR ADDRESS

- R31/ 32, 2nd floor Jandu Tower, Vikas marg, Shakarpur, New Delhi -110092

[www.craw.in](http://www.craw.in)

+91 951 380 5401



@crawsec

